

DESCRIZIONE

Si riportano di seguito i passaggi per la trasformazione di un Wall Fancoil dotato di telecomando (TEL) ad un Wall Fancoil con morsetteria (PXCR).

Questo foglio istruzioni è parte integrante del libretto dell'unità sulla quale viene installato l'accessorio.
A tale documento si rimanda per le AVVERTENZE GENERALI.
L'installazione deve essere effettuata da personale qualificato.

INSTALLAZIONE

1	Unità di partenza
2..5	Rimuovere il cabinet
6	Rimuovere cavi terra
7..9	Rimuovere scatola elettrica
10-11	Rimuovere scheda ricevitore
12	Rimuovere coperchio scatola elettrica

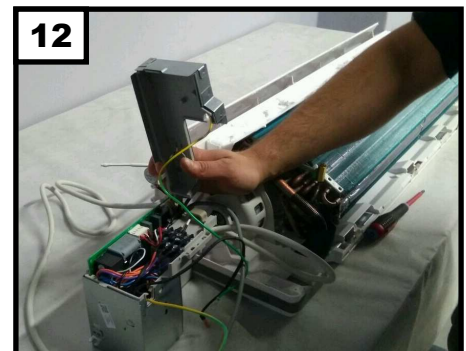
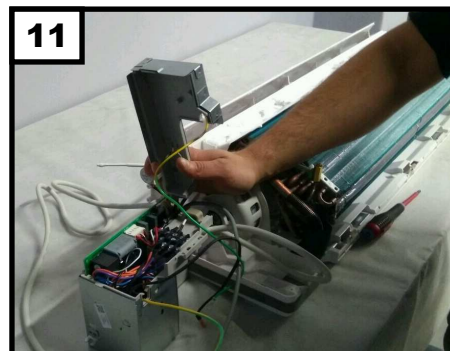
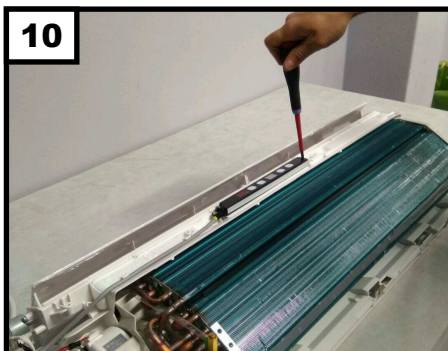
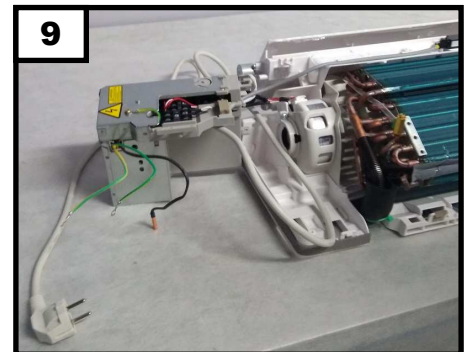
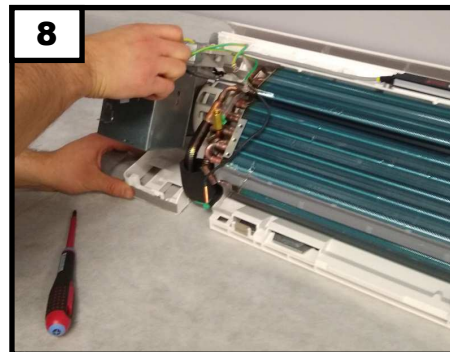
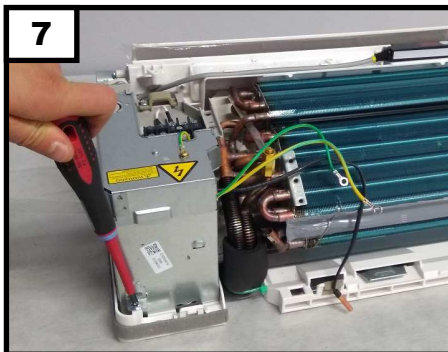
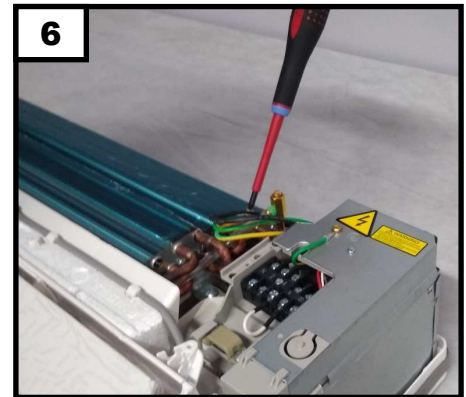
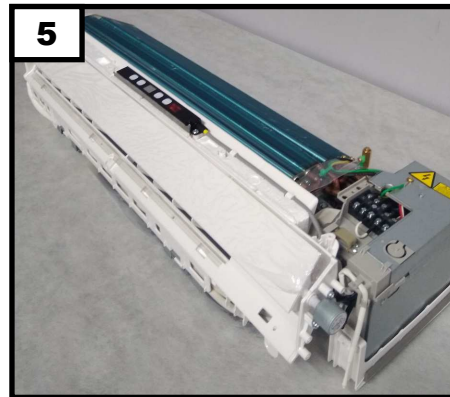
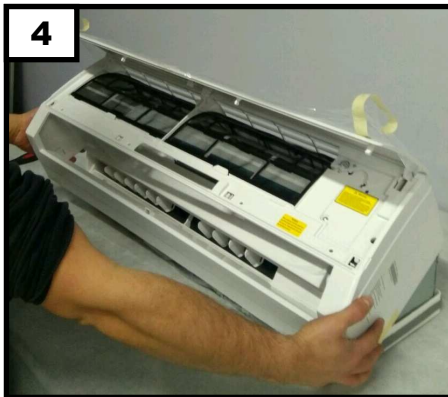
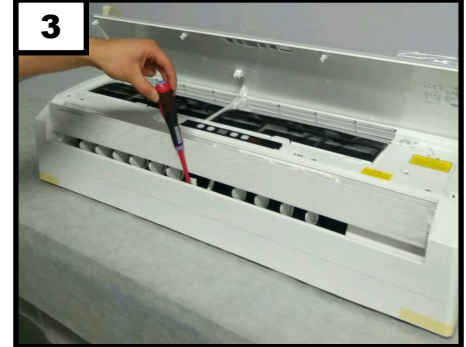
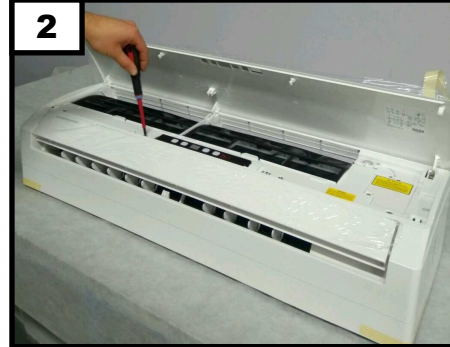
DESCRIPTION

Here below are shown the steps for converting a Wall Fancoil with infrared remote control (TEL) to a Wall Fancoil with terminal board (PXCR).

Hereby instruction sheet is an integral part of the unit's manual on which the accessory is installed.
Please refer to hereby manual for GENERAL RECOMMENDATIONS.
The installation must be performed by qualified personnel.

INSTALLATION

1	Starting unit
2..5	Remove the cabinet
6	Remove earth wire
7..9	Remove electric box
10-11	Remove receiver card
12	Remove the cover of the electric box

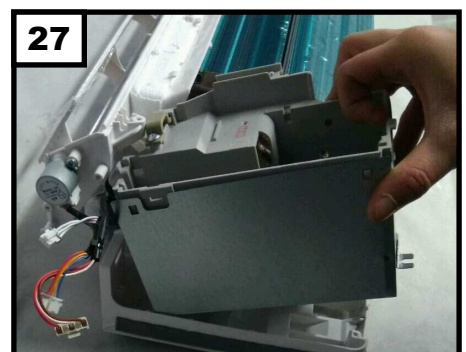
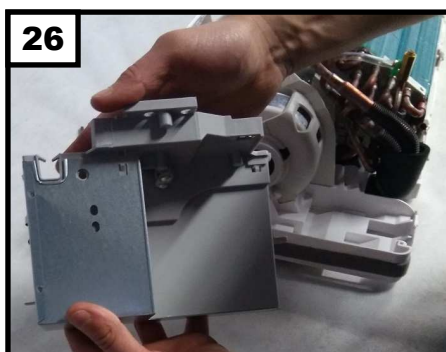
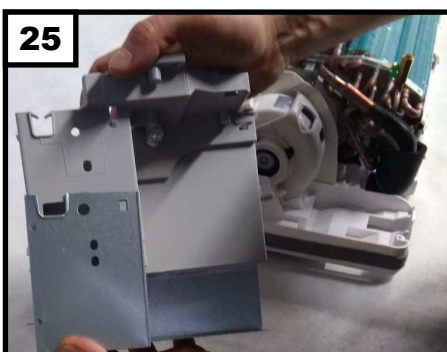
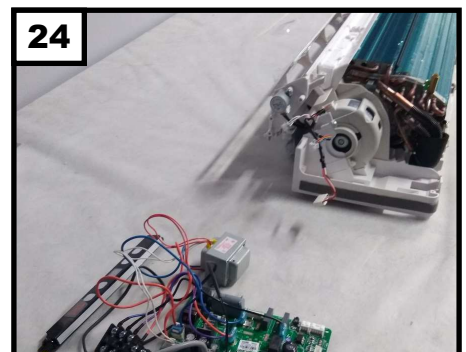
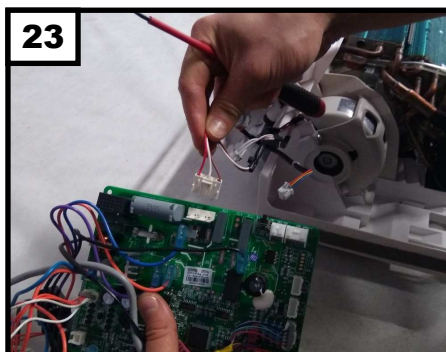
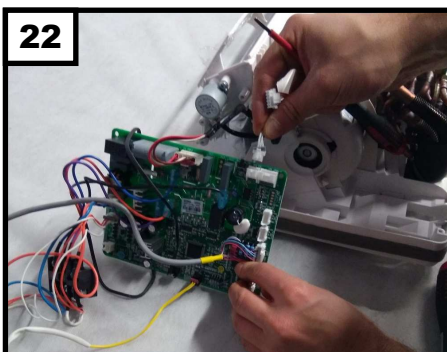
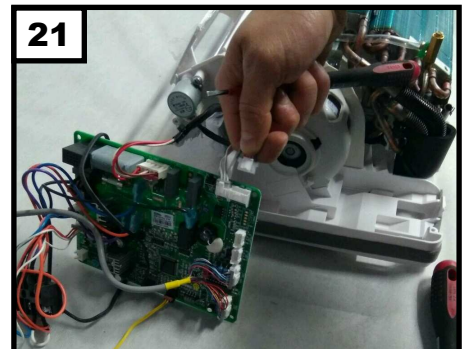
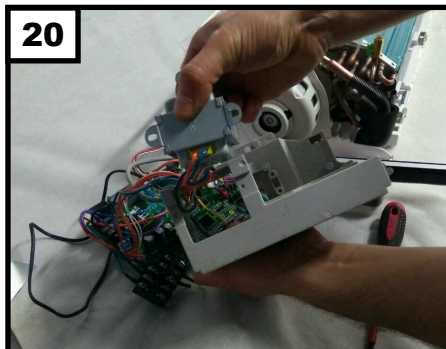
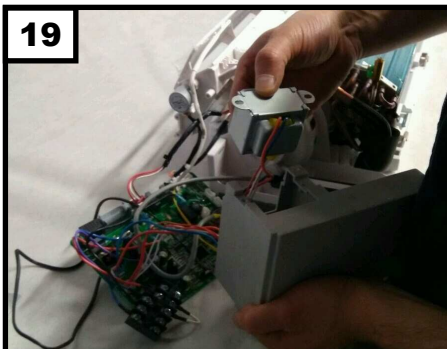
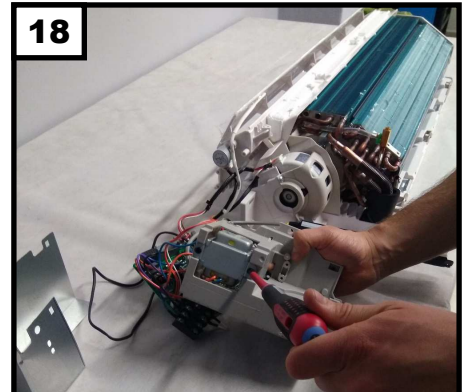
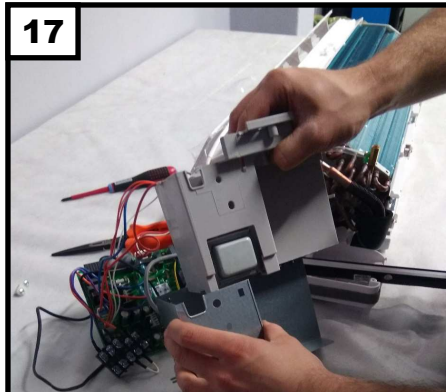
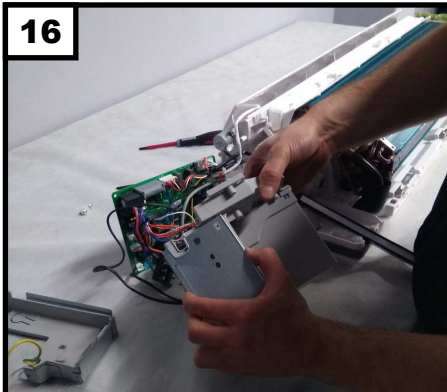
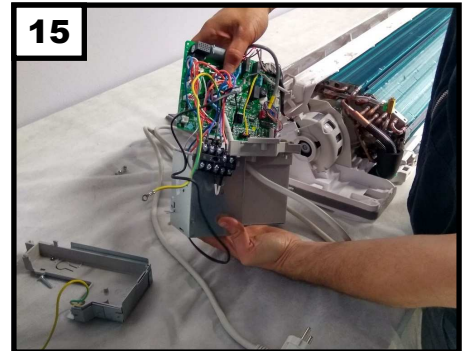
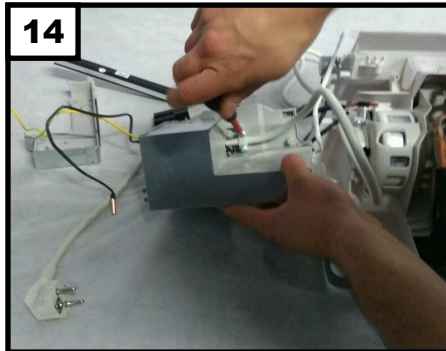
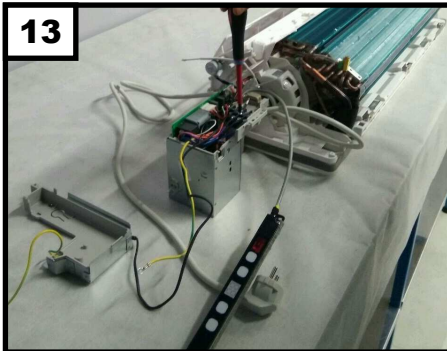
UNITÀ DI PARTENZA - STARTING UNIT

INSTALLAZIONE

13..15	Rimuovere MRS+Cavi+Scheda elettrica
16-17	Smontare scatola elettrica
18-20	Rimuovere Trasformatore
21..23	Sconnettere cavi dalla scheda
24	Parte elettrica completamente rimossa
25..27	Rimontare scatola elettrica

INSTALLATION

13..15	Remove MRS+Cables+Electric card
16-17	Disomount the electric box
18-20	Remove the Transformer
21..23	Disconnect cables from the card
24	Electrical part completely removed
25..27	Refit the electrical box

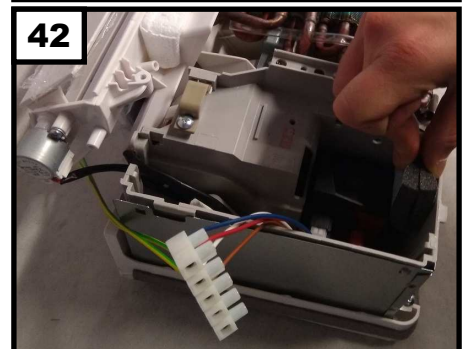
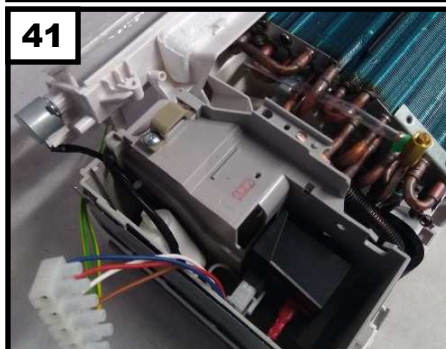
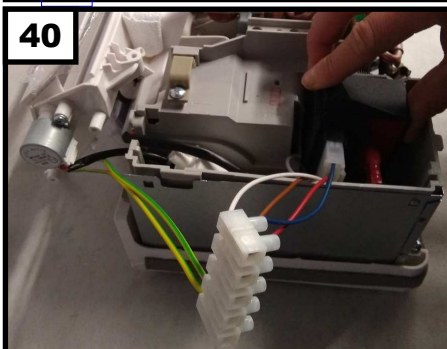
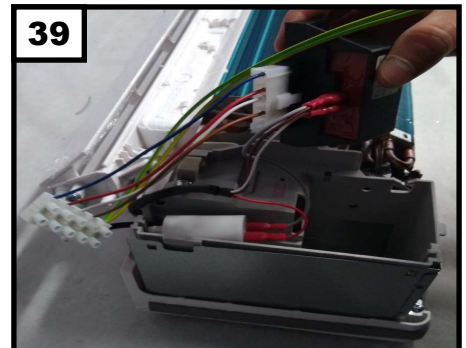
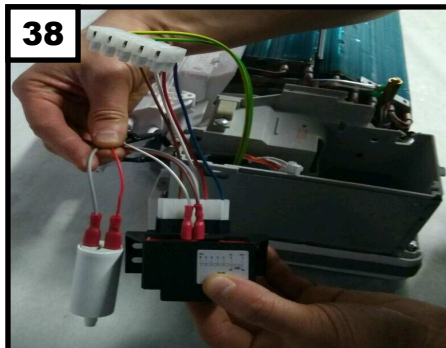
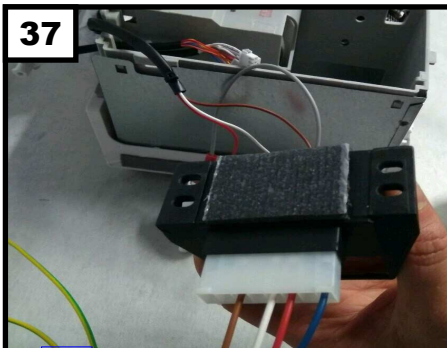
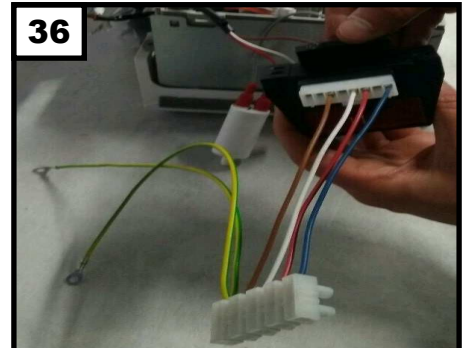
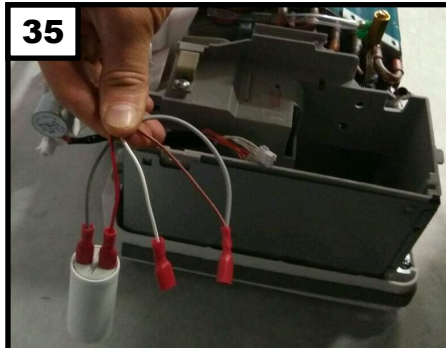
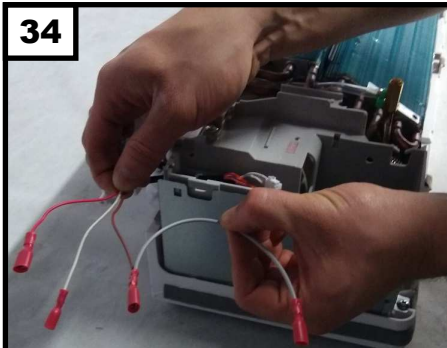
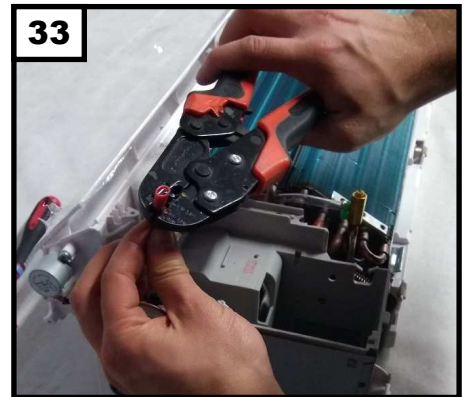
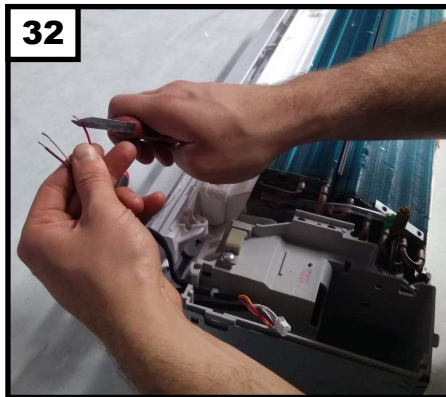
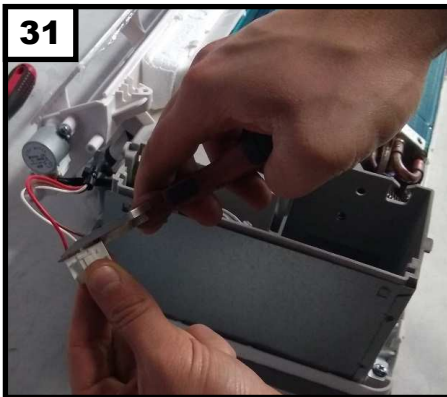
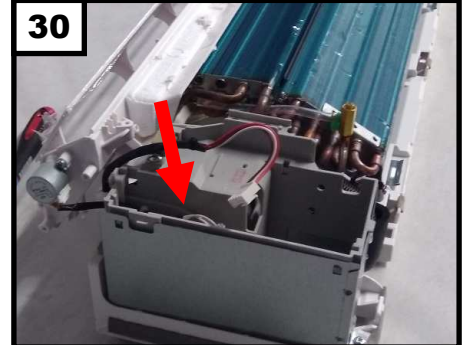
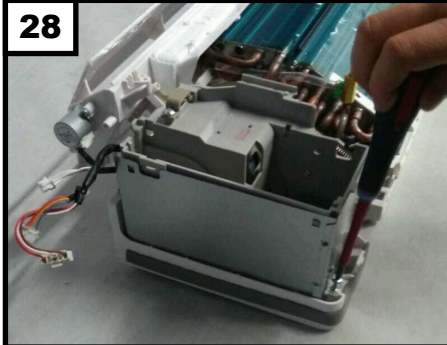


INSTALLAZIONE

28	Rimontare scatola elettrica
29-30	Segregare le 2 prese inutilizzate e tenere solo cavo motore
31..33	Tagliare la presa, spellare e applicare i faston ai cavi motore
34	Cavo motore con faston + 1 ponte sul cavo marrone
35	Collegare condensatore fra Rosso ed estremità ponte
36	Montare MRS1 su AUTR
37	Applicare Biadesivo sulla base dell'AUTR
38	Collegare Cavo motore (BI+MA con ponte) su AUTR
39-42	Posizionare AUTR sulla scatola elettrica

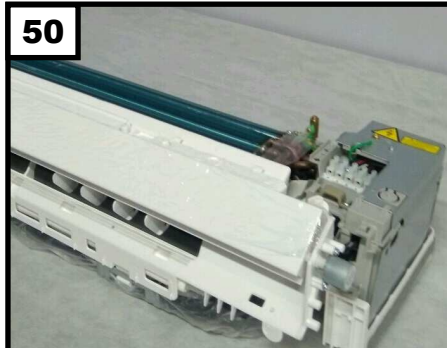
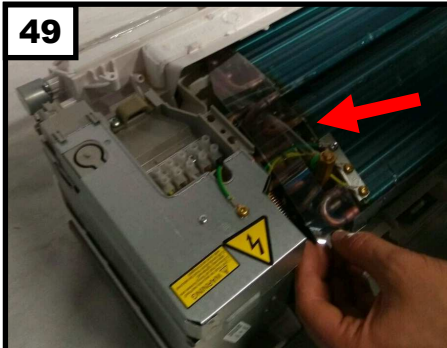
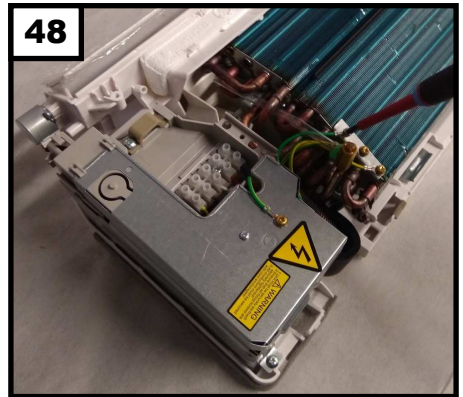
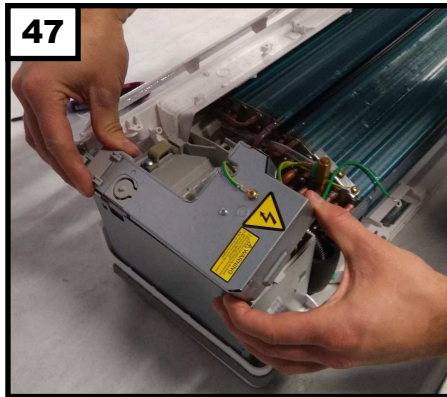
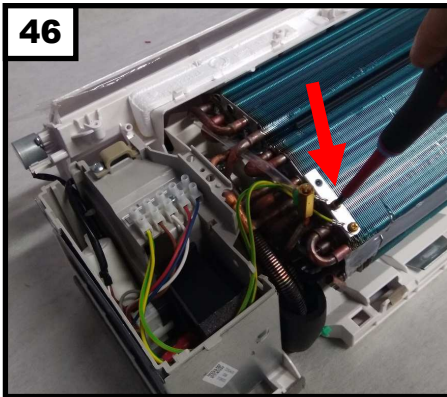
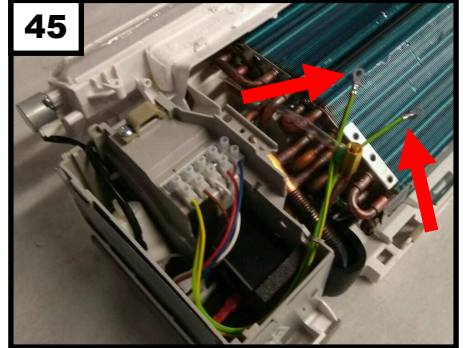
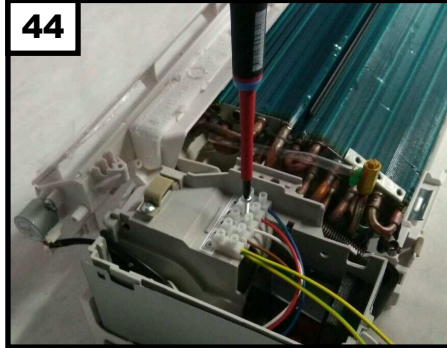
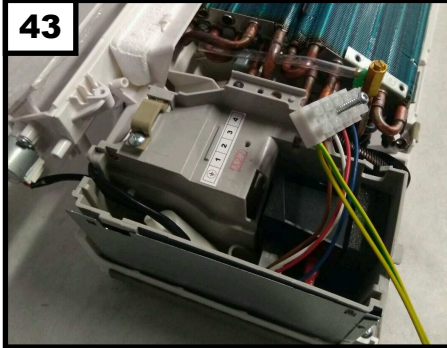
INSTALLATION

28	Refit the electrical box
29-30	Extract the 2 unused sockets and keep only the motor cable
31..33	Cut the socket, strip it and apply the fastons to the motor cables
34	Motor cable with faston + 1 bridge on the brown cable
35	Connect the capacitor between Red cable and the bridge ends
36	Mount MRS1 on AUTR
37	Apply biadesive on the base of the AUTR
38	Connect motor cable (BI+MA with bridge) on the AUTR
39-42	Place the AUTR on the electric box



43	Applicare etichetta morsetti MRS
44	Montare morsetti MRS
45-46	Fissare i 2 cavi Terra
47	Rimontare coperchio scatola elettrica
48	Fissare il cavo Terra del coperchio
49	Applicare la protezione elettrica trasparente
50	Parte elettrica completata
51..53	Rimontare cabinet
54-55	Sostituire etichetta schema elettrico
56	Unità finale

43	Apply MRS electric terminal
44	Mount electric terminal board MRS
45-46	Fix 2 earth wires
47	Refit the electrical box cover
48	Fix the earth cable of the cover
49	Apply the transparent electrical protection
50	Electric part completed
51..53	Reassemble cabinet
54-55	Replace wiring diagram label
56	Final unit



RISULTATO FINALE - FINAL RESULT